

TRAWSGOED ESTATES LIMITED

Canolafan, Llanafan, Trawsgoed, Ceredigion SY23 4AY

Tel: 01974 261747

Dolbeudiau House **Ystrad Meurig, Ceredigion** **(Aberystwyth 12 miles)**

A period farmhouse in an outstanding rural setting
adjoining Cors Caron National Nature Reserve and the River Teifi



TO BE LET

unfurnished

**On an Assured Shorthold Tenancy
for a minimum of 6-months**

The property has recently been redecorated and comprises: 2 reception rooms, kitchen with new electric cooker and multi fuel burner, cloakroom and W.C; 6 bedrooms, bathroom and a shower room both with WCs; oil fired central heating, mains water and electricity; garden, former farm office / games room and ample car parking.

Use of outbuildings and sporting available by separate negotiation.

Rent: £650 pcm

Please contact: M.C. Lewis, Trawsgoed Estate Office: 01974-831267

mlewis@trawsgoed-estate.co.uk

www.trawsgoed-estate.co.uk

To Be Let: Dolbeudiau, Ystrad Meurig, Ceredigion, SY25 6EJ



View of house from Ystrad Meurig to Swyddffynnon Road



Living Room with wood burning stove



Kitchen with new cooker & wood burning stove

To Be Let: Dolbeudiau, Ystrad Meurig, Ceredigion, SY25 6EJ



Dining Room



Bathroom (one of two)



Main Front Bedroom 2.



Landing with doors to Bedrooms 2, 3 & 4

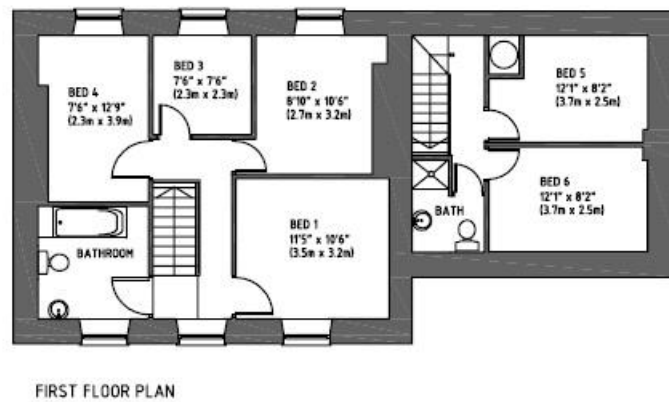
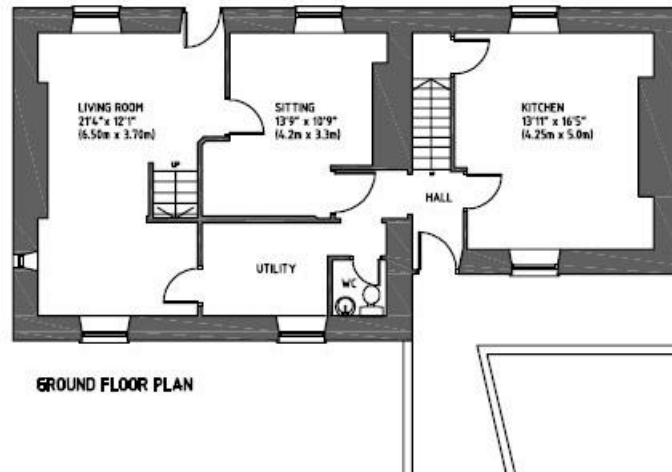


Rear Bedroom 3.



Bedroom 5 over Kitchen

To Be Let: Dolbeudiau, Ystrad Meurig, Ceredigion, SY25 6EJ

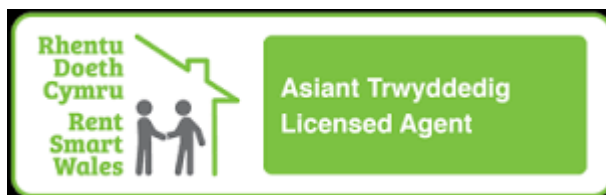
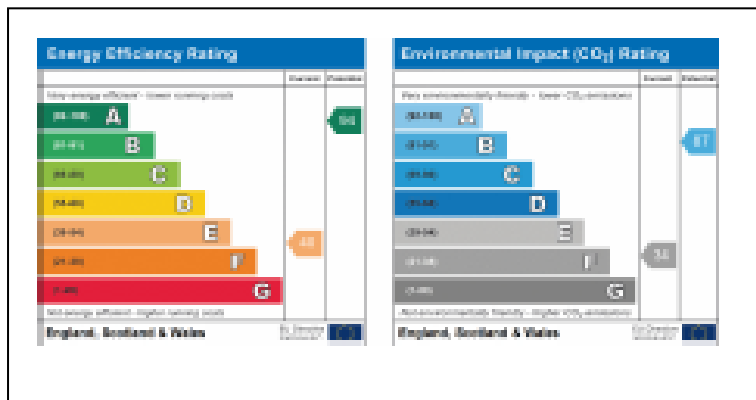
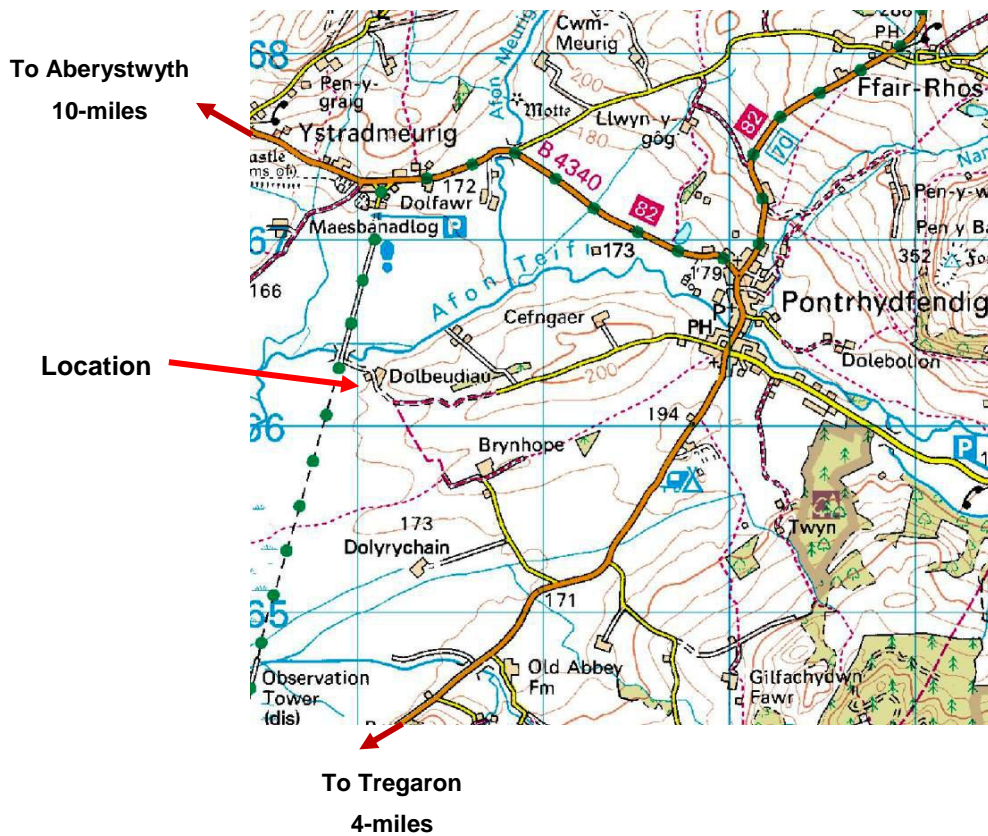


Aerial View over Front Field



Aerial View over Old Farm Buildings

Location Plan



Trawsgoed Estates Limited
 Estate Office, Canolfan
 Llanafan, Aberystwyth
 SY23 4AY



Tel: 01974 271748
 Email: enquiries@trawsgoed-estate.co.uk
www.trawsgoed-estate.co.uk